

vtech[®]

Parents' Guide

KidiGo™

BASKETBALL



VTech understands that a child's needs and abilities change as they grow and with that in mind we develop our toys to teach and entertain at just the right level...

Electronic Learning Computers

Cool, aspirational and inspiring computers for curriculum related learning

Pre-School

Interactive toys to develop their imagination and encourage language development

vtech Baby

Toys that will stimulate their interest in different textures, sounds and colours

I am...

...responding to colours, sounds and textures

...understanding cause and effect

...learning to touch, reach, grasp, sit-up, crawl and toddle

I want...

...to get ready for school by starting to learn the alphabet and counting

...my learning to be as fun, easy and exciting as can be

...to show my creativity with drawing and music so my whole brain develops

I need...

...challenging activities that can keep pace with my growing mind

...intelligent technology that adapts to my level of learning

...National Curriculum based content to support what I'm learning at school

Birth-36 months



3-6 years



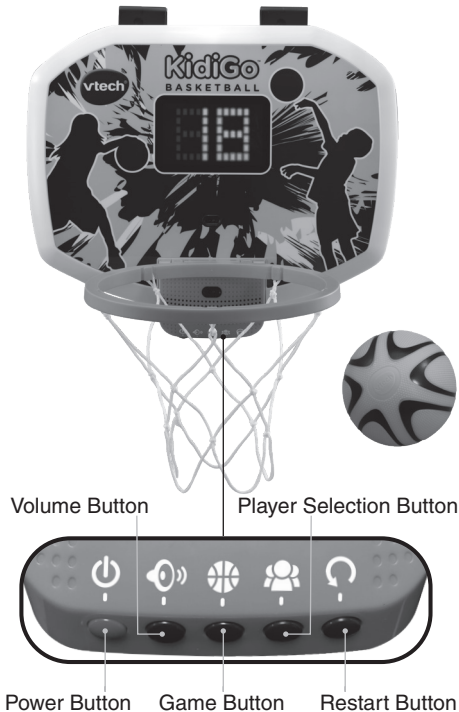
4-10 years



To learn more about this and other VTech® products, visit www.vtech.co.uk

INTRODUCTION

Thank you for purchasing **KidiGo™ Basketball**. Make playtime a slam dunk with this digital scoreboard and basketball. Five games that can be played solo or with up to five players get a boost from lights and encouraging phrases from the interactive scoreboard. Game on!



INCLUDED IN THIS PACKAGE

- KidiGo™ Basketball
- Basketball
- 2 Padded door hooks
- Parent's guide

WARNING:

All packing materials such as tape, plastic sheets, packaging locks, removable tags, cable ties, cords and packaging screws are not part of this toy and should be discarded for your child's safety.

NOTE:

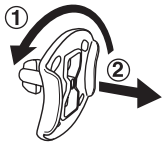
Please keep this Parent's Guide as it contains important information.

WARNING:

This toy produces flashes that may trigger epilepsy in sensitised individuals.

Removing the Packaging Locks

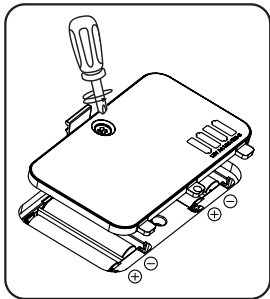
- ① Rotate the packaging lock anticlockwise 90 degrees.
- ② Pull out the packaging lock.



GETTING STARTED

Battery Removal and Installation

1. Make sure the unit is turned **Off**.
2. Find the battery cover on the back of the unit, use a screwdriver to loosen the screw and then open the battery box.
3. Remove old batteries by pulling up on one end of each battery.
4. Install 4 new AA (AM-3/LR6) batteries following the diagram inside the battery box. (For best performance, alkaline batteries or fully charged Ni-MH rechargeable batteries are recommended).
5. Replace the battery cover and tighten the screw to secure.



WARNING:

Adult assembly required for battery installation.
Keep batteries out of reach of children.

IMPORTANT: BATTERY INFORMATION

- Insert batteries with the correct polarity (+ and -).
- Do not mix old and new batteries.
- Do not mix alkaline, standard (carbon-zinc) or rechargeable batteries.
- Only batteries of the same or equivalent type as recommended are to be used.
- Do not short-circuit the supply terminals.
- Remove batteries during long periods of non-use.
- Remove exhausted batteries from the toy.
- Dispose of batteries safely. Do not dispose of batteries in fire.

RECHARGEABLE BATTERIES:

- Remove rechargeable batteries from the toy before charging.
- Rechargeable batteries are only to be charged under adult supervision.
- Do not charge non-rechargeable batteries.

Disposal of batteries and product



The crossed-out wheellie bin symbols on products and batteries, or on their respective packaging, indicates they must not be disposed of in domestic waste as they contain substances that can be damaging to the environment and human health.

The chemical symbols Hg, Cd or Pb, where marked, indicate that the battery contains more than the specified value of mercury (Hg), cadmium (Cd) or lead (Pb) set out in Battery Directive (2006/66/EC).



The solid bar indicates that the product was placed on the market after 13th August, 2005.

Help protect the environment by disposing of your product or batteries responsibly.

VTech® cares for the planet.

Care for the environment and give your toy a second life by disposing of it at a small electricals collection point so all its materials can be recycled.

In the UK:

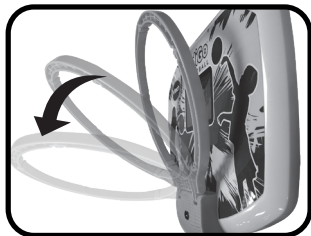
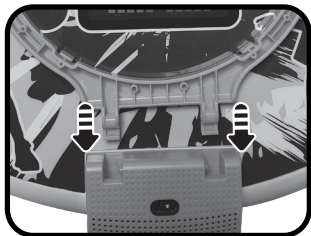
Visit www.recyclenow.com to see a list of collection points near you.

In Australia & New Zealand:

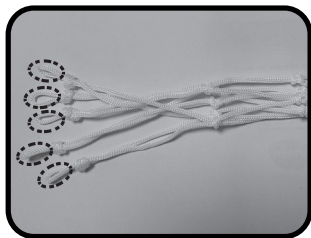
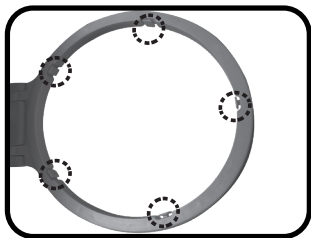
Check with your local council for kerbside collections.

ASSEMBLE

With KidiGo™ Basketball, safety comes first. To ensure your child's safety, please only allow an adult to assemble this product.



1. Hold the rim vertically and slide it down into the backboard as shown. Then, rotate it away from the backboard until you hear it click into place.



2. Place the loops at the ends of the net over the hooks on the bottom of the rim.

NOTE

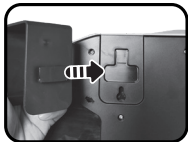
This product is in Try-Me mode in the packaging. To enter normal play mode, first switch on the unit. Then, press and hold the **Restart Button** for a few seconds to proceed with normal play. If the unit powers down or if the light fades out during play, please install a new set of batteries.

MOUNTING THE BACKBOARD

The included door hooks are designed to fit over most doors. To mount them over a door, follow these steps:

1. Insert hooks into the backboard.
2. Slide the hooks down over the top of the door.

Note: If you're unable to hang the backboard over a door or would rather it be lower, you can also use your own mounting hardware and the keyed holes on the back of the backboard to hang it.



PRODUCT FEATURES

1. Power Button

Press the **Power Button** to turn the system **On**. Press the button again to turn it **Off**.



2. Volume Button

Press the **Volume Button** repeatedly to choose from four volume settings.



3. Game Button

Press the **Game Button** to choose between the five game modes.



4. Player Selection Button

Press the **Player Selection Button** to select up to five players in multiplayer game modes.



5. Restart Button

Press the **Restart Button** to restart a game.



6. Automatic Shut-Off

To preserve battery life, **KidiGo™ Basketball** will automatically shut off after approximately 10 minutes without input. The system can be turned on again by pressing the **Power Button**.

GAME MODES

Free Play

Create with your own games! Lights and sounds play as the scoreboard counts your baskets.

Score Challenge

Press the Player Selection Button to set the number of players and see who can make the most baskets in one minute.

Time Challenge

Make a basket before all the backboard lights go out! As you keep going and level up, the lights will start to go out faster and faster.

Colour Challenge

Time your shot to turn on the correct colour lights. As you make more baskets and level up, the lights will switch on and off faster and faster.

Hot Potato

Press the Player Selection Button to set the number of players, then shoot until you make a basket and quickly pass the ball to the next player. Whoever has the ball when the music stops is out! Keep playing until you have a winner.

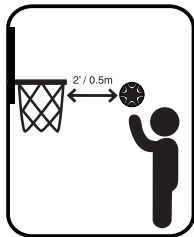
CARE & MAINTENANCE

1. Keep the unit clean by wiping it with a slightly damp cloth.
2. Keep the unit out of direct sunlight and away from any direct heat sources.
3. Remove the batteries if the unit will not be in use for an extended period of time.
4. Do not drop the unit on a hard surface and do not expose the unit to moisture or water.
5. The unit is surface washable. Remove the electronic module before wiping down the unit.

TROUBLESHOOTING

If the unit doesn't keep score properly, please try any of the following:

- Replace the batteries.
- Raise the hoop above your head.
- Stay back 2' / 0.5m or further from the hoop.
- Reposition the backboard so it is not in direct sunlight.
- Pump up the ball to ensure it is fully inflated.



Note: The score counting sensor on KidiGo™ Basketball works best in indoor environments.

If for some reason the unit stops working or malfunctions, please follow these steps:

1. Turn the unit **Off**.
2. Interrupt the power supply by removing the batteries.
3. Let the unit stand for a few minutes, then replace the batteries.
4. Turn the unit **On**. The unit should now be ready to use again.
5. If the unit still does not work, install a new set of batteries.

If the problem persists, please contact our Consumer Services Department, and a service representative will be happy to help you.

CONSUMER SERVICES

Creating and developing **VTech®** products is accompanied by a responsibility that we at **VTech®** take very seriously. We make every effort to ensure the accuracy of the information, which forms the value of our products. However, errors sometimes can occur. It is important for you to know that we stand behind our products and encourage you to call our Consumer Services Department with any problems and/or suggestions that you might have. A service representative will be happy to help you.

UK Customers:

Phone: 0330 678 0149 (from UK) or +44 330 678 0149 (outside UK)
Website: www.vtech.co.uk/support

Australian Customers:

Phone: 1800 862 155
Website: support.vtech.com.au

NZ Customers:

Phone: 0800 400 785
Website: support.vtech.com.au

PRODUCT WARRANTY/ CONSUMER GUARANTEES

UK Customers:

Read our complete warranty policy online at vtech.co.uk/warranty.

Australian Customers:

**VTECH ELECTRONICS (AUSTRALIA) PTY LIMITED –
CONSUMER GUARANTEES**

Under the Australian Consumer Law, a number of consumer guarantees apply to goods and services supplied by VTech Electronics (Australia) Pty Limited. Please refer to vtech.com.au/consumerguarantees for further information.

**Visit our website for more
information about our products,
downloads, resources and more.**

www.vtech.co.uk
www.vtech.com.au

